

AURORA COFFEE TABLE RECTANGLE



Featuring the Cracked Earth, one of our specialist finishes. Its deeply textural nature is reminiscent of the dried out and fissured earth Fiona was inspired by during a safari trip in South Africa. The textured segmented top is complimented by the strong, metal geometric base.



AURORA COFFEE TABLE RECTANGLE VARIATIONS

DIMENSIONS RECTANGLE

390mm H x 1600mm W x 850 mm D
15.35in H x 62.99 in W x 33.46in D

VARIATION I



BRONZE CRACKED
EARTH TOP

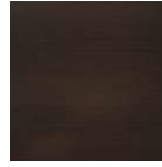


BRONZE FINISH
BASE

VARIATION II



PEWTER CRACKED
EARTH TOP



BRONZE FINISH
BASE

LEAD TIME & SHIPPING

12 - 14 weeks + shipping. Shipping costs quoted upon confirmation of delivery address.

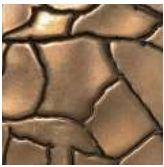
NOTES

This piece can be tailor made to bespoke sizes and finishes, please enquire for further details.

FINISHES VARIATIONS

FBC London products are fabricated to the highest quality. The majority of finishes are made and finished by hand and thus some variation is to be expected. FBC London works closely with our fabricators to assure all the finishes are to our typical high standards and closely align to FBC master references. With finishes of natural material such as wood and stone inherent disparities in colour and grain pattern because of variations caused by nature, over which FBC London has no control. FBC London cannot guarantee exact colour, grain, or texture of wood or stone but will work closely with you as our client to highlight this where necessary

VARIATION III



GOLD CRACKED
EARTH TOP



BRONZE FINISH
BASE

VARIATION IV

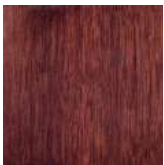


MID-BROWN OAK
TOP



BRASS FINISH
BASE

VARIATION V



HIGH GLOSS
WALNUT TOP



BRASS FINISH
BASE

ALTERNATIVE FINISH COMBINATIONS
AVAILABLE, SEE FBC LONDON FINISHES
LOOKBOOK FOR REFERENCE OR
CONTACT FBC LONDON TO SPECIFY
BESPOKE FINISHES FOR YOUR ORDER.
(BESPOKE DESIGN FEE CHARGES MAY BE APPLICABLE)

LINE DRAWINGS

